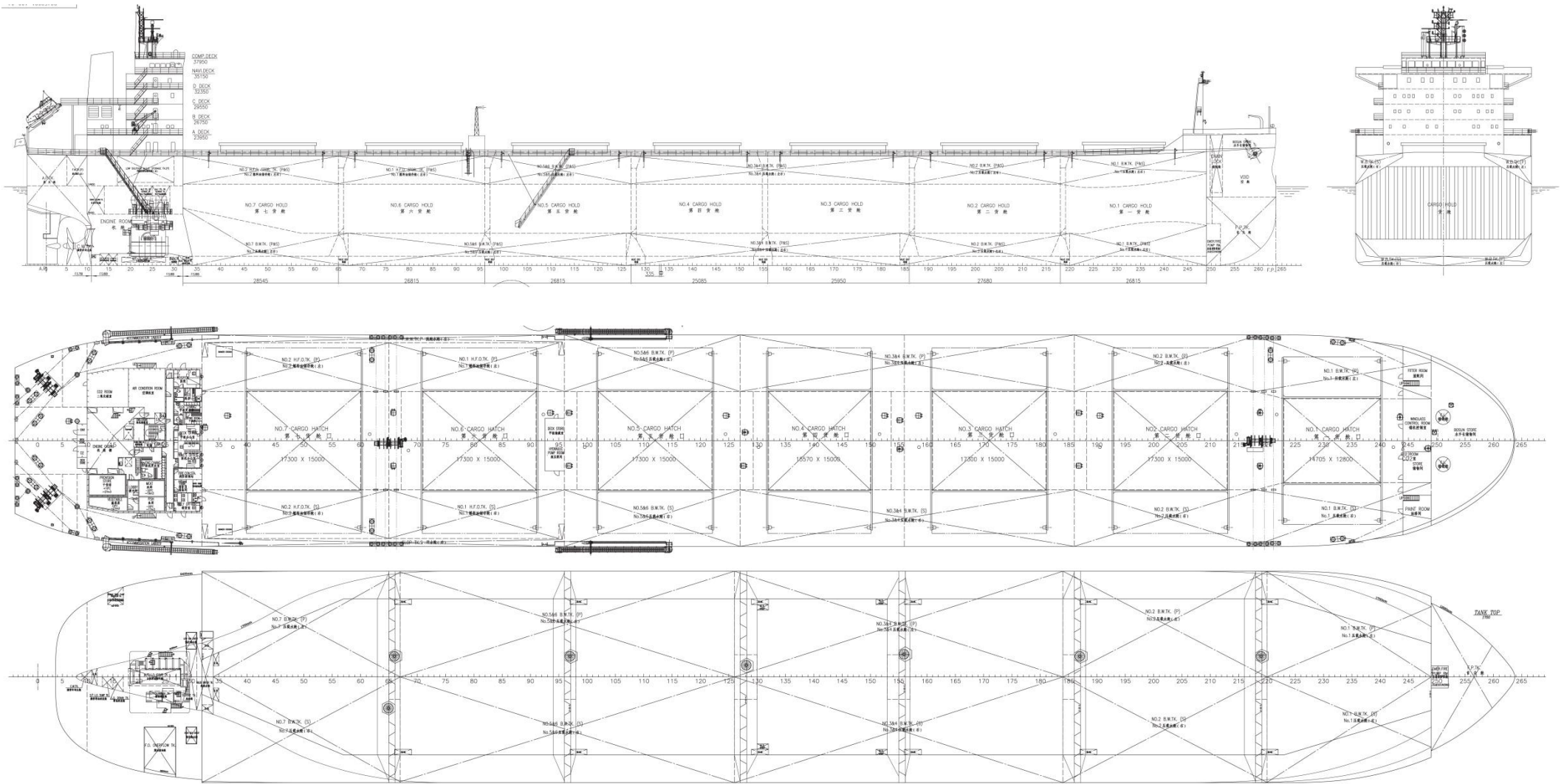


# KAMSARMAX CLASS



## KAMSARMAX CLASS – DESCRIPTION

<b>Type</b>	modern, single deck, bulk carrier		<b>Deck Strength</b>	Tank top (No1+3+5+7/2+4+6)	28.000/19.000 mtons/m <sup>2</sup>	
<b>Built</b>	Istria 2013			Main-Deck (no cargo on m-deck)	2 mtons/m <sup>2</sup>	
<b>Deadweight</b>	DWT at scantling 81.669,00 t			Hatch covers (No1/No2/No3-7)	6.7/4.1/3.5 mtons/m <sup>2</sup>	
<b>Principal dimensions</b>	Length Overall	229,00 m	<b>Capacity of tanks</b>	Heavy fuel oil tanks:	2.477,000 m <sup>3</sup>	
	Breath Overall	32,26 m		Diesel oil tanks	273,000 m <sup>3</sup>	
	Depth Moulded	20,05 m		Ballast water tank: (excl. CH 3)	22.817,400 m <sup>3</sup>	
	Height (Keel to Highest Point)	47,494 m		Fresh water tanks	401,000 m <sup>3</sup>	
	Gross tonnage International	43.951,000		Sewage Tank available	50,000 m <sup>3</sup>	
	Net tonnage International	27.698,000				
<b>CARGO SPACE</b>			<b>Speed</b>	Service Speed	Fully Laden	14,0 knots
					Ballast	15,0 knots
<b>Gear</b>	Vessel is gearless			De-Balasting Speed	2.400,00 m <sup>3</sup> /h	
<b>Hatches/Holds</b>	2 Panels Side Rolling hatchcover types					
<b>Hatch Dimensions (L X W)</b>	No 1	14,705 x 12,80 mtrs	<b>Main engine</b>	MAN B&W 5S60ME-C8 TII		
	No 2, 3, 5, 6, 7	17,30 x 15,00 mtrs		CO <sub>2</sub> fitted		
	No 4	15,57 x 15,00 mtrs				
<b>Hold Dimensions (L X W)</b>	No 1	26,340 x 126,995 mtrs	<b>Grain Cubic Breakdown</b>	No 1	12.558,200 m <sup>3</sup>	
	No 2	27,680 x 32,260 mtrs		No 2	14.862,300 m <sup>3</sup>	
	No 3	26,925 x 32,260 mtrs		No 3	14.447,600 m <sup>3</sup>	
	No 4	24,085 x 32,260 mtrs		No 4	12.882,700 m <sup>3</sup>	
	No 5	26,840 x 32,260 mtrs		No 5	14.454,500 m <sup>3</sup>	
	No 6	26,815 x 32,260 mtrs		No 6	14.399,400 m <sup>3</sup>	
	No 7	29,020 x 23,517 mtrs		No 7	14.486,400 m <sup>3</sup>	
				Total	98.091,200 m <sup>3</sup>	
<b>Flat Bottom Dimensions (L X W)</b>	No 1	25,085 x 10,20/ 23,80 mtrs	<b>Bale Cubic Breakdown</b>	No 1	12.050,000 m <sup>3</sup>	
	No 2	24,220 x 23,800 mtrs		No 2	14.260,000 m <sup>3</sup>	
	No 3	23,355 x 23,800 mtrs		No 3	13.870,000 m <sup>3</sup>	
	No 4	19,895 x 23,800 mtrs		No 4	12.360,000 m <sup>3</sup>	
	No 5	24,220 x 23,800 mtrs		No 5	13.870,000 m <sup>3</sup>	
	No 6	23,355 x 23,800 mtrs		No 6	13.820,000 m <sup>3</sup>	
	No 7	25,085 x 23,80/5,31 mtrs		No 7	13.900,000 m <sup>3</sup>	
				Total	94.130,000 m <sup>3</sup>	